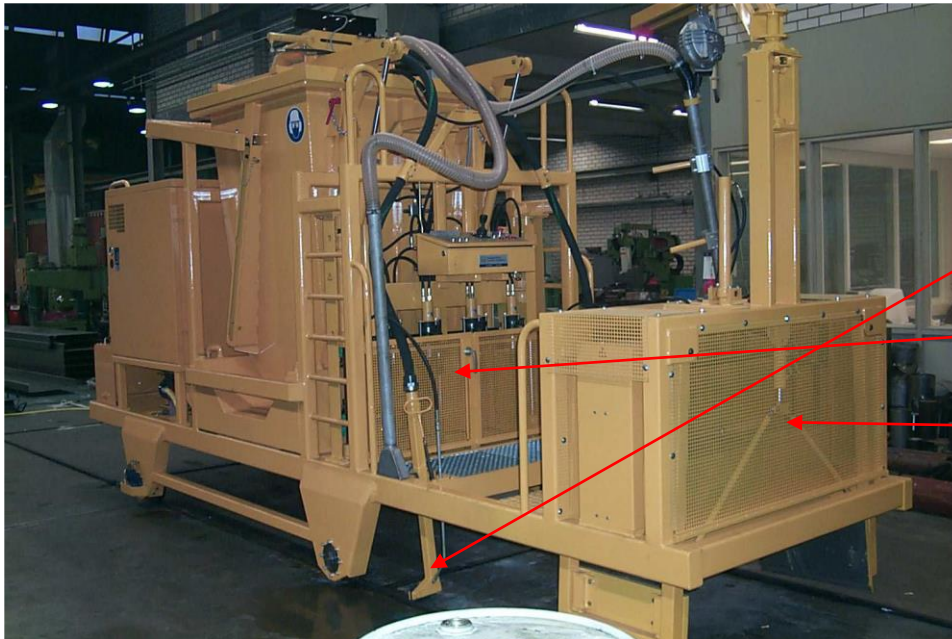


Concore Concrete Aspirator



Rail cleaning

Weep hole drilling

V-shape unit

Manual operated Aspirator machine with removable hopper for emptying.
The machine as shown is provided with rail cleaning, weep hole drilling and a solid V shape maker.
The V-shape maker unit can also produce any other shape.

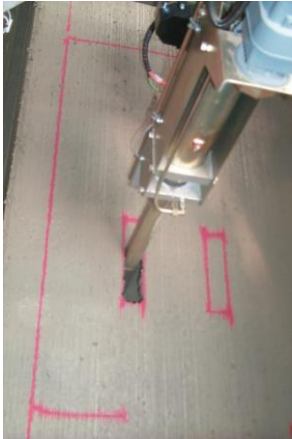


Weep hole drilling

Lift hook hole unit

XYZ suction tube

Semi-automatic operated Aspirator machine with Hook prepare unit and weep hole unit.



Automated suction tube.
Please note nowadays we
use ink instead of paint on



Ergonomic operator posi-
tion with joysticks and
touch screen



Bottom hopper opening for
easy emptying and cleaning

The Concore Concrete Aspirator machine cleanly removes fresh concrete from designated places in the slab. The Aspirator is provided with a powerful vacuum system and a hopper to collect the concrete, the hopper can be opened in order to empty and also guarantee easy cleaning. The Concore Aspirator is hydraulically or electrical driven and is provided with either a manually operated suction tube or the semi-automatic version, in which the suction tube is placed in a XYZ system. The suction tube in this system is operated with joysticks. The semi-automatic version is also provided with an operator panel in order to program the different strand patterns and other settings in the machine.

- Manual or semi-automatic version
- Rail cleaning system
- Optional extra units, e.g. K-end, solid end, weep hole and hook preparation
- Electric driven power cable drum
- Concore Remote Support

Technical details:

Length	from 4800 mm, depending on extra modules
Traveling speed	max. 40 m/min
Suction power	18,5-22 kW, < 85 dB (A)
Hydraulic power	5,5 – 15 kW, depending on extra modules
Power supply	3 P + PE 400 V 50/60 Hz
Weight	4500 - 7300,00 kg